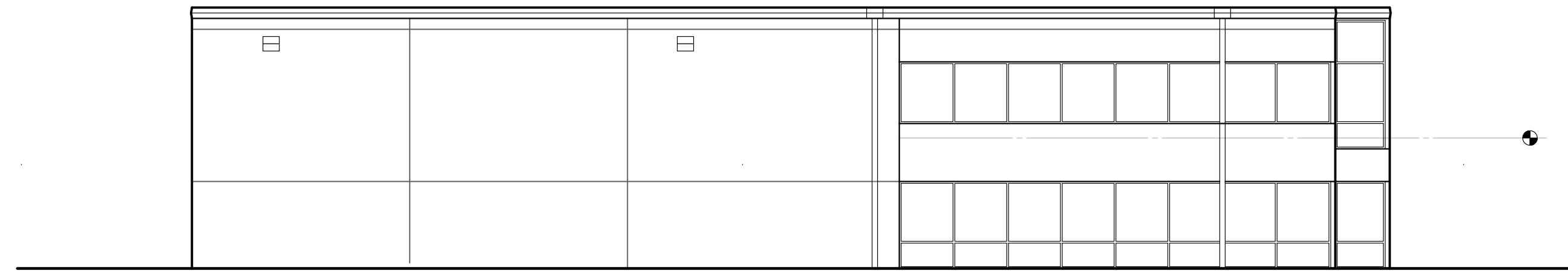
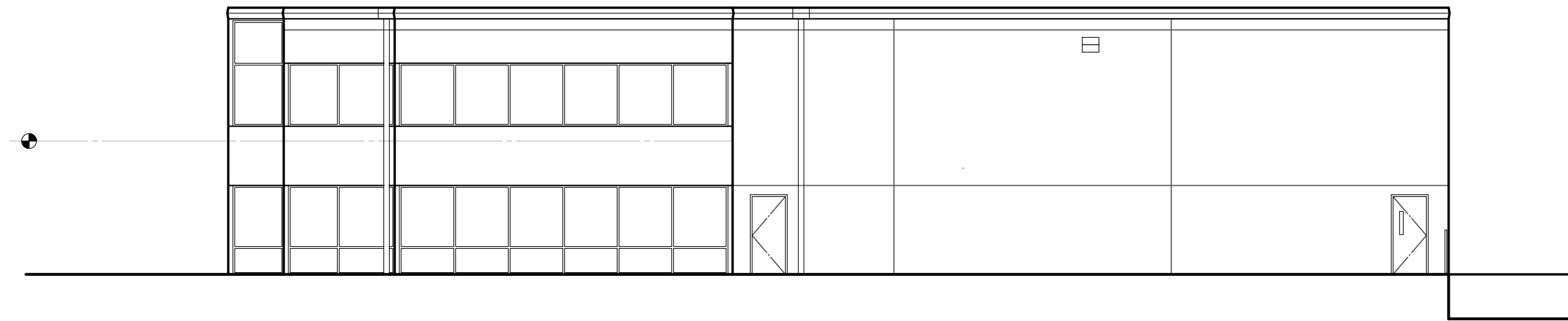


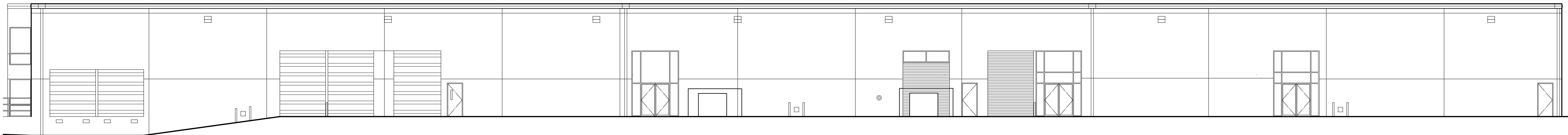
WEST ELEVATION  
3/32" = 1'-0"



NORTH ELEVATION  
3/32" = 1'-0"



SOUTH ELEVATION  
3/32" = 1'-0"



EAST ELEVATION  
3/32" = 1'-0"

No./Date	Revision	By

Date

Drawn By

Checked By

Project Number

File Number

Sheet Title

Sheet Number